

Caution | Please read the manual before use.
Real color of product and catalog image color can be different.
Contents in this catalog can be changed without any notice.

M2 Corporation
Man · Machine · Interface

TOP RB SERIES



TOP RB SERIES

Product Catalog

M2I Corporation

HEAD OFFICE ADDRESS: 11-35, Simin-daero 327beon-gil, Dongan-gu, Anyang-si, Gyeonggi-do 14055, Republic of Korea
TEL: 031-465-3366
FAX: 031-465-3355
E-mail: sales@m2i.co.kr

V 1.0K 251225

m2i.co.kr/eng

M2I Corporation is an AX·DX-based smart factory solution platform company, delivering total solutions built on HMI/SCADA development and manufacturing, with extended expertise in robot control and logistics automation.

TOPRB SERIES

CONTENTS

Industrial Field Operation 04P

Industrial IoT Gateway

TOP Design Studio 06P

Key Features

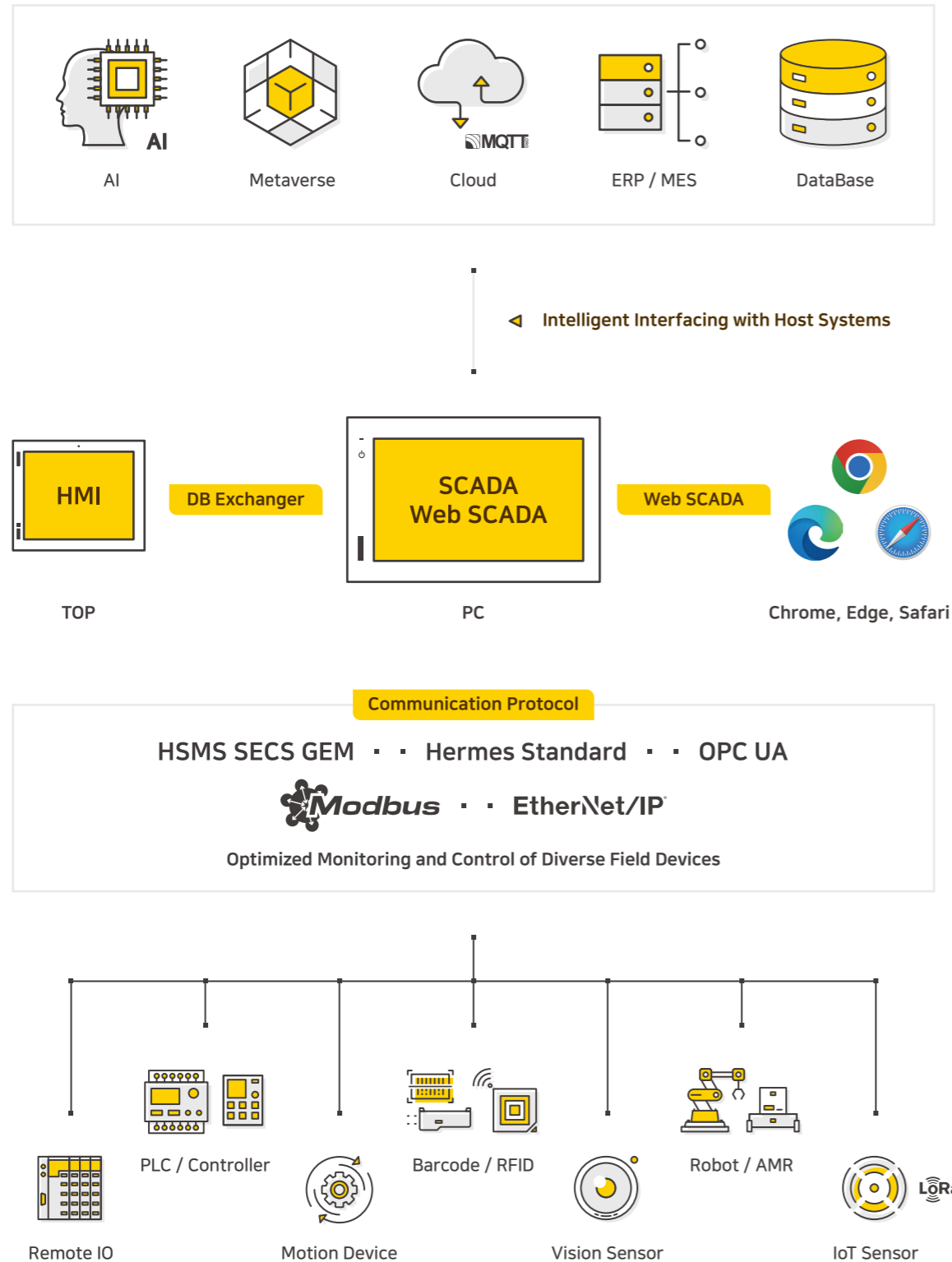
TOPRB SERIES 08P

HMI Basic Series

Global Networks 12P

Purchase and Technical Service

Introducing an Industrial IoT Gateway Powered by TOP-VIEW(SCADA)



Key Features



Integration with Host Through Database

Database integration is simple through the user-friendly UI. With the DB Exchanger function, HMI data can be stored in the database and accessed directly from SCADA.



Various Reports Provided

Supports Excel file formats, enabling you to save and print reports. Generate reports using existing on-site templates, and print directly to a connected printer without launching Microsoft Excel.

21 CFR Part 11

21 CFR Part 11 Compliance Support

Compliant with U.S. FDA 21 CFR Part 11, providing a secure and efficient work environment with authentication, audit trails, supervisory control, and data management.

VNC

In-house VNC

Our proprietary VNC enables secure remote access and real-time monitoring and control of TOP & TOP-VIEW screens via mobile devices, tablets, and PCs.

OPC UA

Supports the industrial standard OPC UA

Using the future-ready and highly scalable OPC UA protocol, the system ensures reliable data collection and management while enabling seamless integration with higher-level systems.

SECS / GEM

Supports SECS/GEM Protocols

Supports HSMS SECS/GEM protocols for the semiconductor industry, ensuring stable data communication based on defined scenarios.

Hermes Standard

Supports the Hermes communication protocol for SMT equipment

SMT equipment data communication via Hermes Standard, with no additional hardware or cost.

SMS & Email

SMS & Email

Automatically sends SMS and emails based on on-site conditions for instant factory status updates.



Optimized Data Analysis

TDS enables efficient data search and table-based monitoring, with intuitive analysis through trend, record, bar, meta, and pie charts.

400+ Protocol

Supports 400+ Industrial Protocols

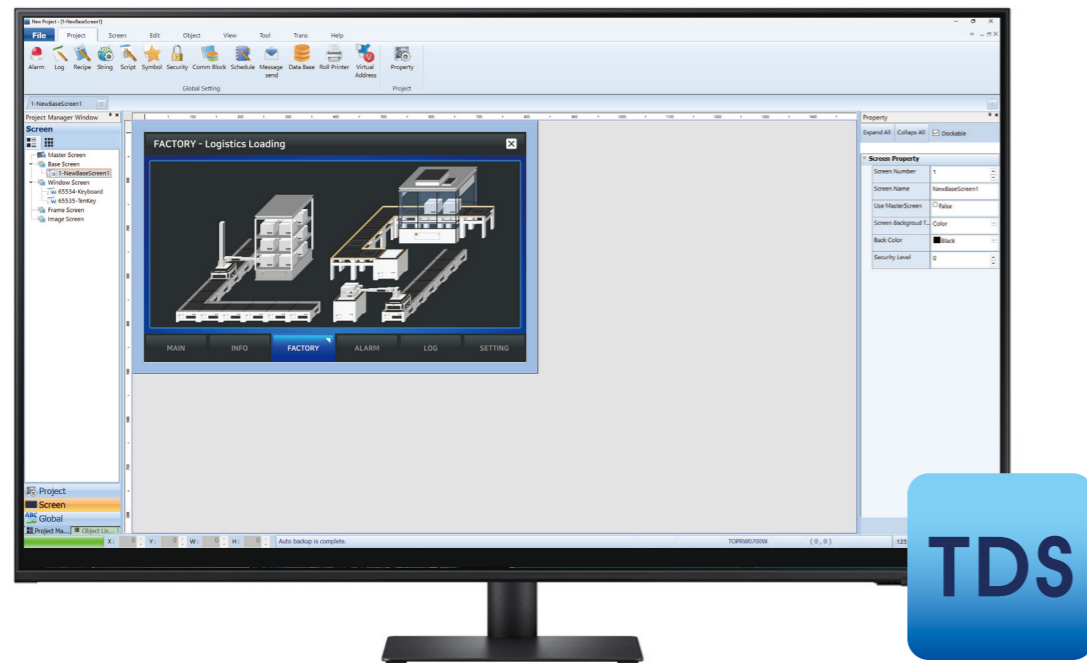
Supports diverse industrial protocols for reliable integration and flexible operation.

TOP Design Studio

TOP Design Studio is software for creating and editing HMI project files, available as a free download from the M2I website (m2i.co.kr/eng).

In Short:

- **Intuitive UI** Easy for anyone to use
- **Legacy model Migration** ATOP / XTOP
- **Advanced animations** Vivid
- **Training** M2I Training room
- **YouTube** Accessible anytime, anywhere



TOP Design Studio

Key Features



Easy function creation [Effects & Actions]

Functions are implemented using a unified [Condition] - [Effect] - [Action] structure, enabling consistent behavior across all object types.



Offline / Online Simulator

- * **Offline Simulator:**
Allows you to test-run projects directly in TDS without TOP or a controller.
- * **Online Simulator:**
Enables test operation of projects in TDS while running the actual controller program connected to a PC (2-hour time limit).



Various image libraries

Offers 16M full-color images, scalable vector graphics, and a 3D library for enhanced visual depth.



Optimized Data Analysis

TDS provides efficient data search, table monitoring, and intuitive analysis through multiple chart types.

JavaScript



JavaScript Programming Support

TDS supports JavaScript programming, enabling efficient project expansion from simple commands to advanced logic with sample code.

HMI-SCADA Project Compatibility

TDS enables HMI and SCADA project creation with seamless conversion between TOP and TOP-VIEW.

TOPRB SERIES

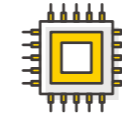
HMI Basic Series

Interface *Varies by model

- SERIAL 3 CHANNEL
- ETHERNET 2 CHANNEL
- USB HOST



Key Features



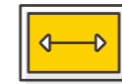
Quad Core CPU

Quad-core CPU for high-speed processing



16M Full Color

Bright full-color graphics with vector image library support



1024 x 600, 800 x 480, 480 x 272 High-Resolution Support

10", 7", and 4.3" wide screens for an expanded workspace



All-in-one body with a sleek design

Premium all-in-one design for an elegant look and easy handling.



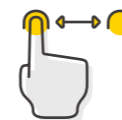
Wide industrial communication protocol

Broad compatibility with 400+ controllers and support for modern industrial networks, including Modbus and EtherNet/IP.



Optimized Interface Configuration

Optimized interface configuration with up to 3 serial channels, 2 Ethernet ports, and 2 USB ports.



Touch Drag Function

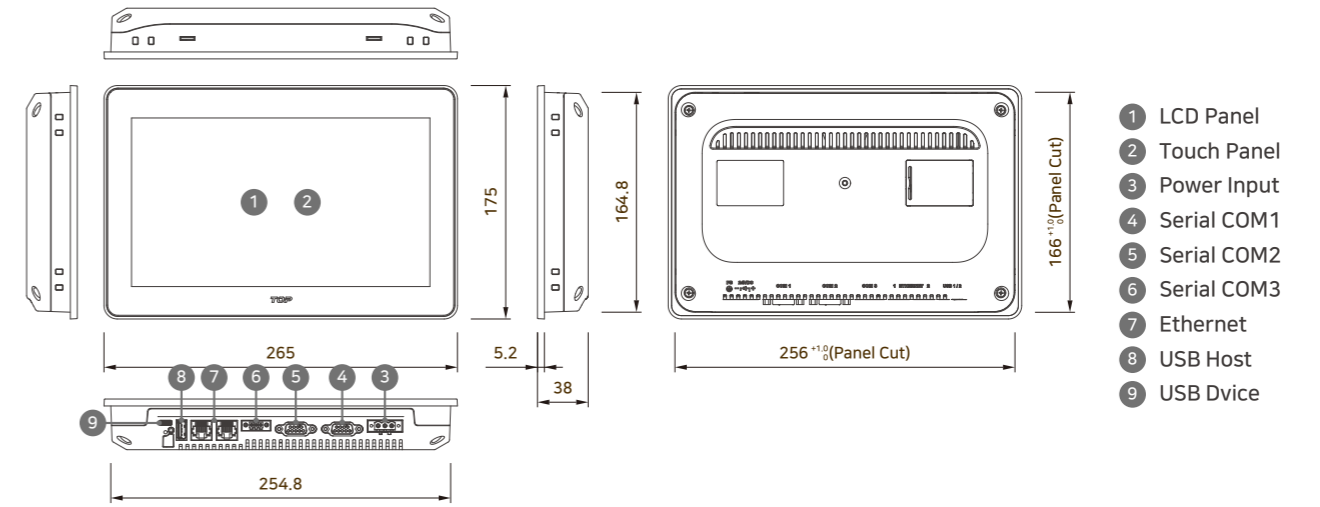
Enables drawing and note-taking via touch drag, and reveals the top menu with a swipe gesture.

TOPRB SPECIFICATIONS

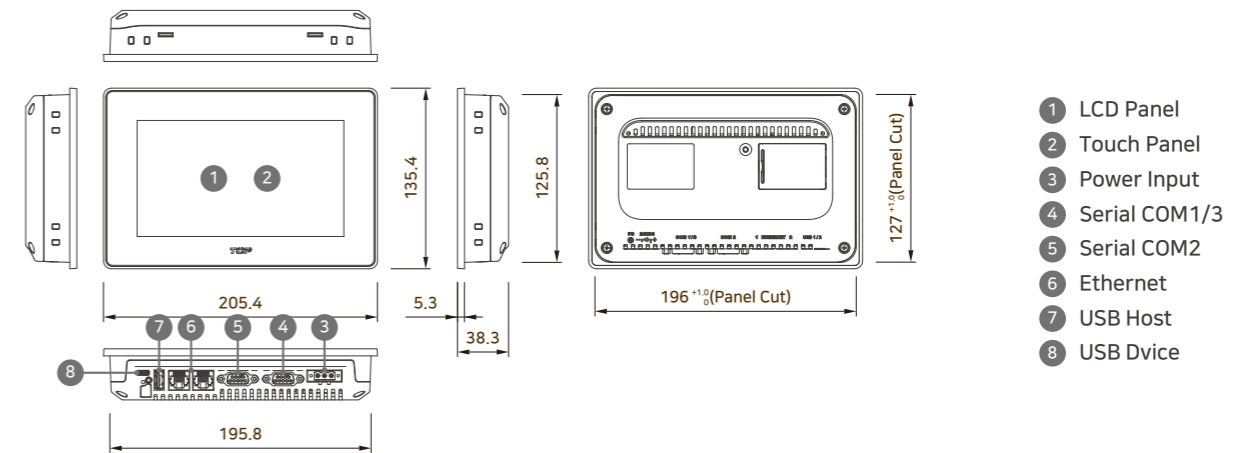
Functional	TOPRB1000WD	TOPRB0700WD	TOPRB0400WD	
Display	Display Type	10.1" TFT Color	7" TFT Color	4.3" TFT Color
	Color		16M Colors	
	Display Area(mm)	222.72 x 125.28	154.08 x 85.92	95.04 x 53.86
	Resolution(dot)	1024 x 600	800 x 480	480 x 272
	Brightness Level		10 Levels(by software)	
	Backlight Type		LED	
Touch	Backlight Life		50,000 hours	
	Touch Type		Analog resistive film	
	Resolution(Cell)	1024 x 600	800 x 480	480 x 272
	Touch Life		1 million times or more	
Serial COM1	RS-232C Asynchronous Data bit: 7/8 bits, Stop bit: 1/2 bits, Parity bit: None/Odd/Even Baud rate: 2400~115.2kbps Connector: DSUB 9pin x 1			
	Serial COM2	RS-232C, RS-422/485 Asynchronous Data bit: 7/8 bits, Stop bit: 1/2 bits, Parity bit: None/Odd/Even Baud rate: 2400~115.2kbps Connector: DSUB 9pin x 1	RS-422/485 Asynchronous Data bit: 7/8 bits, Stop bit: 1/2 bits, Parity bit: None/Odd/Even Baud rate: 2400~115.2kbps Connector: DSUB 9pin x 1	
Interface	Serial COM3	RS-485 Asynchronous Data bit: 7/8 bits, Stop bit: 1/2 bits, Parity bit: None/Odd/Even Baud rate: 2400~115.2kbps Connector: 3.5mm 3pin x 1	RS-485 Asynchronous Data bit: 7/8 bits, Stop bit: 1/2 bits, Parity bit: None/Odd/Even Baud rate: 2400~115.2kbps Connector: DSUB 9pin x 1	-
	Ethernet	IEEE802.3i/IEEE802.3u, 10BASE-T/100BASE-TX Connector: RJ-45 x 2		
	USB Host	USB 2.0 Compatible, Output 5Vdc/0.5A Support: USB Storage, USB Barcode Scanner(Standard Keyboard Protocol) Connector: USB Type A x 1		
	USB Device	USB 2.0 Compatible, Max 5m Connector: USB-C x 1		
	Printer	Roll printer(EPSON protocol): RS-232C		
Memory & Others	Screen memory	128MB		
	Real Time Clock	Built in		
	Status LED	1 LED(Operation) Built in		
Power	Input Voltage	24Vdc(20 ~ 28Vdc)		
	Power Consumption	15W		
	Voltage Sag	24Vdc, Within 10ms		
	Insulation Resistance	500Vdc, 10MΩ		
	Operation Temperature(°C)	-10 ~ +50		
	Storage Temperature(°C)	-20 ~ +60		
	Operation Humidity(%RH)	0 ~ 90(No dew)		
	Atmosphere	No corrosive gas		
	Vibration Endurance	Amplitude: 10sF < 25Hz(2G) X, Y, Z each direction(for 30 minutes)		
	Noise Immunity	1000Vp-p(Pulse width 1μs)		
Environment	Electrostatic Discharge	Connective discharge from EN61000-4-2: ±4kV		
	Shock Endurance	10G X, Y, Z each direction(for 3 times)		
	Ground Connection	Class 3(100Ω or less)		
	Protection Classification	IP66		
	Certification(On Progress)	CE, UL, UKCA		
	Panel Cut(mm)	256 x 166	197 x 127	120 x 91
	External Dimension(mm)	265 x 175 x 38	205.4 x 135.4 x 38.3	126.6 x 97.6 x 38.2
Structure	Weight(kg)	0.8	0.5	0.2
	Cooling System	Natural air circulation		
	Case Material	Plastic		

DRAWING

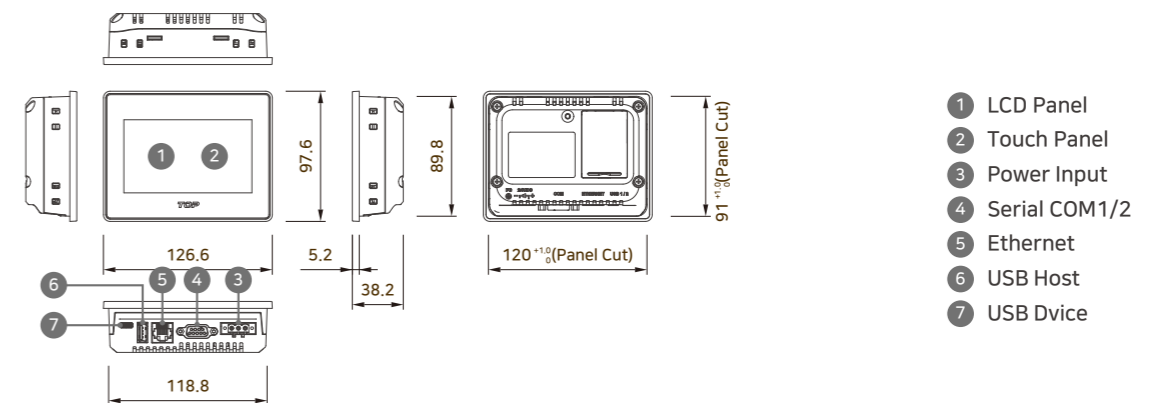
TOPRB1000WD



TOPRB0700WD



TOPRB0400WD

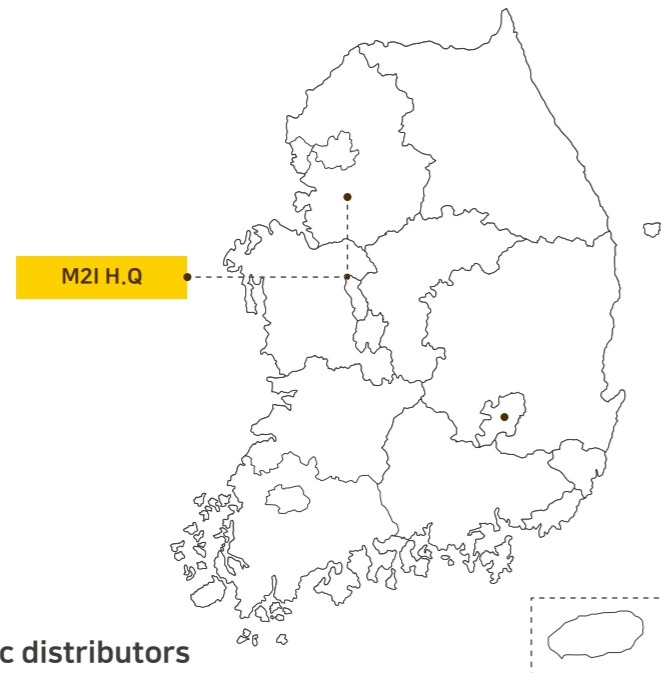


Global Networks



Global Business Partners

China, the United States, Vietnam, Japan, South Africa, Turkiye, Singapore, Russia, Greece, France, Jordan, Honduras, Nigeri, Indonesia, India, Israel, Iran, Thailand, Malaysia, and more.



Over 40 domestic distributors

Seoul, Gyeonggi, Daejeon, Daegu, Gwangju, Ulsan, Changwon, Busan etc.

Purchase Inquiries: sales@m2i.co.kr

M2I Official YouTube Channel
Tutorials & Troubleshooting Guides



LinkedIn
New launches. Join us on Linkdln



Our Promise to Customers

Customer Dialogue Customers first, growing together
Continuous Growth Driven by ongoing R&D
New Transformation AX·DX-based smart factory platform

Technical Support Service sales@m2i.co.kr